



NEWSLETTER END OF TERM 3 – 2022

01 December 2022

Greetings to our LEMS Community. We have finally come to the end of another exciting year which was packed with so many activities particularly from mid -October to the end of term. We would like to thank you all for your support and take this opportunity to wish you all a pleasant and safe festive season.

STANDARD 7s TRIP TO KASANE

This year our Standard 7s were treated to a fun packed field trip to Kasane. Our students were taken:

- ◆ Across the border to Zimbabwe to see the Victoria Falls. *The smoke that thunders*
- ◆ On a game drive into the Chobe National Park.
- ◆ On a Boat Cruise down the Chobe River.
- ◆ To the Crocodile Farm.
- ◆ To visit the Lesoma Memorial.

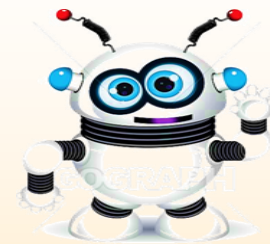


BOOT CAMP FOR ROBOTICS

1ST – 2ND NOVEMBER 2022

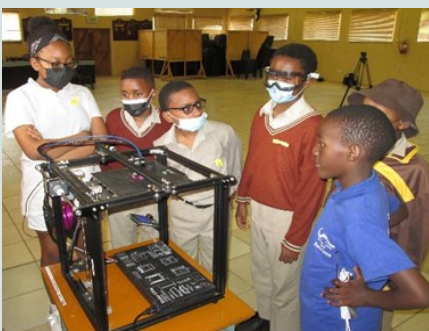
This comprised two events: First one was here at LEMS and the second was at the Fairgrounds. We were the only Primary school to be involved in this new and exciting initiative.

Our students learnt to build robots and were exposed to 3D printing. Robotics enhances mathematical/engineering/creativity and mechanical skills.



STREAM: SCIENCE/TECHNOLOGY/ROBOTICS/ENGINEERING/ART/MATHEMATICS

This year's STREAM event took place from the 16th—17th October for the Std 1-6 and on the 15th November for the Std 7s. The STREAM event allows students to showcase their Science projects and it enhances thinking/creativity and problem solving.



LEGAE CELEBRATING INTERNATIONAL HOLIDAYS

These past months were very busy as we had a lot of International events:



DIWALI

24th October 2022

Festival of Lights. In India, one of the most significant festivals is Diwali, or the Festival of Lights. It's a five-day celebration that includes good food, lights, coloured sand, and special candles.



HANUKKAH DAY

29 November 2022



REMEMBRANCE DAY

11 November 2022

Armistice Day: Observe 2 minutes of Silence to remember those lost in the War.



Hanukkah is a Jewish festival commemorating the recovery of Jerusalem and subsequent rededication of the Second Temple at the beginning of the Maccabean.

WORLD AIDS DAY

1st December 2022



This year the global theme is "Equalize" which is a call to action for all of us to pursue the tried-and-true methods required to redress disparities and aid in the eradication of AIDS.

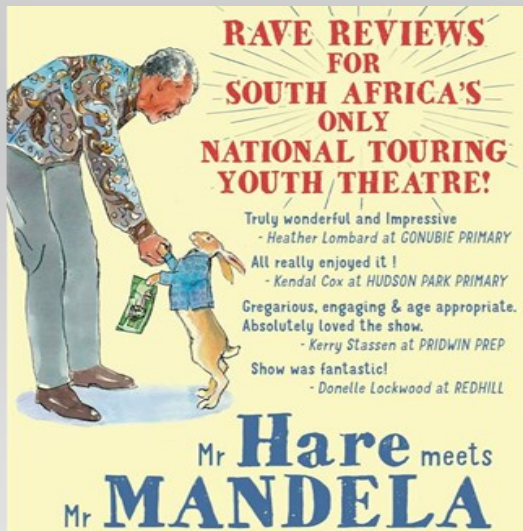
CHRISTMAS DAY

25 December 2022



Mr Hare Meets Mr Mandela

A travelling theatre group from South Africa known as Ticket to the Moon came to LEMS on 17 October 2022 to offer a play called Mr Hare meets Mr Mandela. It was a play based on the novel written by Chris Van Wyk.



LEMS Offers a 20% discount to 20 students for Term One 2023

A special hat draw ceremony was organized during morning assembly on 25 November 2022. Names of students were picked in hats for each stream. Letters will be sent to the parents of the lucky winners.

Legae: Extra Curricular Activities Bird Life Botswana

A number of students have joined the Bird Life Society and every year the society has an annual prize for environmental conservation. Xuan Hon Zhou won the overall best award for entering his project which showed an Eagle sitting on its nest and protecting its eggs.



Horse Riding

We have as many as 30 students who go for horse riding weekly at Pangolin Farm Stables owned by Ms Sue Binders in Notwane.



Prize Giving Ceremony



This year's annual prize giving ceremony was held on the 30th November 2022.

The theme was Rewarding Excellence. It was well attended and a very successful event.

This year LEMS decided to also give awards to all the top achievers in all the external activities (extra-curricular) which include: Spanish and Horse Riding.

The V Hamilton Trophy which is awarded to the best teacher based on outstanding results was given to **Mrs Moduwane** the ICT teacher. She produced best results in Cambridge ICT. All her students obtained Merit for 2021 and 2022. **LEMS was the only Primary School which offered Cambridge ICT.**

Christmas Food Baskets



Hampers for front line workers

As part of its outreach programme aimed at helping people in need Legae Academy and LEMS have made a joint effort to collect a few non-perishable grocery items to give to the front line workers who are on duty during the festive season keeping us safe. Parents were written to and requested to donate too. A special Grocery box was set up in front of the Admin Block. LEMS is grateful to those students/parents and others who have brought in various items. The organizations chosen to be given hampers including: Botswana Police, BDF, Health Workers, Department of Internal Security (DIS) and The Department of Home Affairs.



FOR YOUR DIARY

Kindly note that school closes on the Friday 2nd December at 11:00am

The new Term begins on January 17th 2023.

TERM 1-2023

Tues 10 Jan	Teachers reporting back
Mon 16 Jan	Orientation Day
Tues 17 Jan	School Opens
Fri 24 – 27 Feb	Mid—term break
Thurs 6 April	Schools Closes

Exciting things to look out for in 2023

We will be re-opening our Reception Class in January 2023.

We will be turning our sports field green- yes there is a complete make over being planned during this period when the school will be closed to develop the Sports Field. LEMS will now be having lawn on its Sports Field.

Legae English Medium School wishes you a happy Festive Holiday and a Prosperous New year.

